



## Installation and Operation Manual



FOR SALES AND SERVICE, PLEASE CALL 1800 777 255  
OR CONTACT YOUR LOCAL STATE DISTRIBUTOR

For further information and service, visit our website  
[www.kreepykrauly.com.au](http://www.kreepykrauly.com.au)

SHERWOOD OVERSEAS CO. PTY. LTD.  
A.B.N. 13 008 756 750

KREEPY KRAULY DIVISION  
321 Selby Street, Osborne Park, Perth, W.A. 6017 Australia.  
Telephone: (08) 9446 9811 Facsimile: (08) 9445 3457  
E-mail: [service@kreepykrauly.com](mailto:service@kreepykrauly.com)

We reserve the right to revise, change, or modify Kreepy Krauly without incurring any obligations to make like changes on Kreepy Krauly's previously sold. This publication remains the sole copyright of Sherwood Overseas Co. Pty. Ltd. Written consent must be obtained before any of its contents are reproduced.

Main drain valve open.

Shut off main drain valve, or fit expanding plug. (Available from your Kreepy Krauly representative.)

Low vacuum, slow, faltering hammering sound.

Inlet from main drain leaking.

Install expanding plug.

Combined vacuum plate and auto skim valve leaking.

Check correct size plate was supplied and re-install ensuring correct seating in skimmer box.

More than one skimmer box fitted to pool.

Block off water flow from skimmer boxes other than the one to which Kreepy is fitted.

Blockage within Kreepy Krauly machine or hose.

Clean out obstruction in machine, or flush out hose.

Pool pump unit does not develop enough vacuum to power the Kreepy Krauly machine.

Check for faulty pump, or possibly fit a more powerful unit.

Kreepy Krauly does not sit at an angle of 45° and has difficulties in attaching itself to the pool floor.

Hose weight(s) is incorrectly positioned on hose, or is not fitted.

Fit hose weight(s) and adjust by moving furthest weight closer to or further away from the machine until suction seal is flat on the pool floor.

Bumper strap not fitted.

Fit bumper strap.

Swivel float foam missing.

Insert float foam in swivel head.

Kreepy Krauly stays at one end of pool.

Kreepy Krauly hose too short.

Fit correct length of Kreepy Krauly hose or use hose joiner to extend existing hose.

Kreepy Krauly hose is kinked or coiled.

Lay hose out straight in the hot sun until kinks disappear, and allow to cool in that position. Alternatively a similar treatment using warm water can be used, please consult your Kreepy Krauly representative.

Return to pool outlets force Kreepy Krauly hose away from that area.

Adjust outlets so they do not influence the Kreepy Krauly.

Incorrect hose fitted to Kreepy Krauly machine.

A genuine Kreepy Krauly hose MUST always be fitted to the machine.

The addition of an extra hose weight along the hose can assist directional stability.

Kreepy Krauly travels slowly or does not pulsate; bubbles noticed at return to pool outlets.

Air leak in the plumbing system, check following item:

Hair and lint, pot lid or "O" ring incorrectly fitted.

Check "O" Ring for damage, replace if necessary and refit correctly.

Inground pipes broken, or leakage at joints in system.

Consult your pool service man.

Hole in Kreepy Krauly hose.

Locate by lifting hose near surface of water and listen for hissing sound, use hose joiner to rectify the problem.

Pump has lost its prime.

Reprime pump.

Pump cavitates.

Auto skim valve jammed. Clean and replace.

Pool water level too low.

Fill pool to correct level.

Auto skim valve fitted too close or above the water level.

Fit anti-vortex washer on valve.

Kreepy Krauly wedges itself on, or around step area.

A special step deflector bumper is available from your Kreepy Krauly representative. Alternatively restrict movement of Kreepy Krauly away from the problem area by shortening the hose if this is practical. Any small area missed by Kreepy Krauly can easily be swept down afterwards.

Kreepy Krauly repeatedly comes level with the surface of the pool, possibly drawing in air.

Auto skim valve not installed.

Fit Auto skim valve inside skimmer box as per instructions.

Hose weight(s) fitted incorrectly.

Readjust hose weight(s).

Large leaves blocking Auto skim valve (generating excessive vacuum).

Clean Auto skim valve.

Floatation unit does not move freely.

Clean floatation unit whilst in pool, to rinse away any foreign matter which could be restricting its movement.

Kreepy Krauly sticks to main drain.

Fit a Kreepy Krauly main drain cover over drain.

Poor finish of pool floor around the main drain.

Fit a Kreepy Krauly main drain cover over drain.

Kreepy Krauly will only climb part way up the pool wall and tends to remain in that position.

Sole worn.

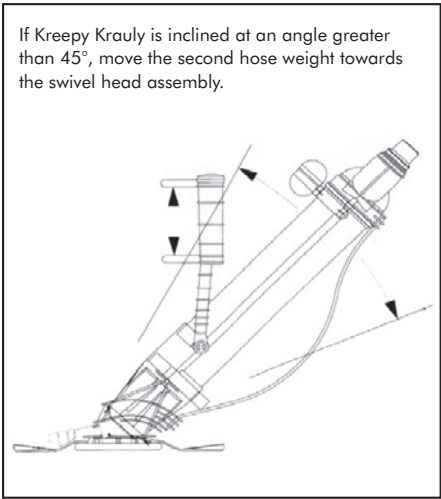
Fit new sole.

### HOW TO CLEAN THE FLOW VALVE



Remove baffle plate by pressing plastic clips inwards, clear flow valve and replace baffle plate and sole.

**BALANCE SYSTEM** Kreepy Krauly works most effectively when inclined at 45° with the seal flat on the pool surface. To test the balance adjust switch off the pool pump, tow Kreepy Krauly into approx. 1.2m of water and allow it to settle to bottom. The seal must be sitting flat on the pool floor and the drive tubes should be at 45°



to the floor. If Kreepy Krauly is lifting (i.e. at an angle of more than 45°), move the second hose weight towards the swivel. Adjust until the seal sits flat on the pool surface. Allow Kreepy Krauly to settle back to the bottom after each adjustment. Turn your pump on and Kreepy Krauly will move around your pool cleaning it automatically. **Note:** If you have difficulty balancing Kreepy Krauly, remove the first hose weight or consult your local Kreepy Krauly service centre by phone for advice.

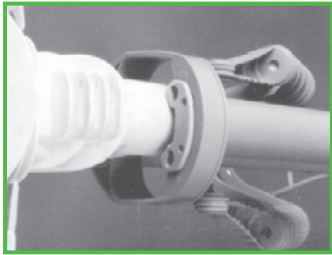
Adjusting the angle and balance of Kreepy Krauly

**EXTENDED FLOAT BAR** The extended float bar as shown fits into either bridge. It can also be rotated 180° when fitted to the lower bridge. Three positions are possible.



The extended float bar

The effect of both float bars is to hold the floats a set distance away from the top drive tube. The Float bar will not be required on many free form concrete pools. When you require Kreepy Krauly to turn early down the wall or away from the wall to avoid obstacles, the simple rule is that the greater the restricted distance between the floats and the top drive tube the earlier Kreepy Krauly will turn.



The Pilot Control

**PILOT CONTROL** In box section pools and above ground pools this attachment can be used to great advantage, usually in conjunction with the extended float bar. For excellent random floor sweeping with rapid turning action away from the pool wall, the pilot control should be fitted as shown and the extended float bar fitted in the lower bridge between floats. Please consult your Kreepy Krauly Distributor/Installer before using this combination.

**PLEASE NOTE: The extended float bar and pilot control are optional items for particular pools. They are not included as standard equipment.**

## ATTENTION POOL BLANKET OWNERS

When a Pool Blanket is in use, carefully monitor your chlorine or salt water chlorinator settings to avoid over chlorinating your pool which may damage your Kreepy Krauly and void your Warranty.

The Pool Blanket prevents chlorine evaporating reducing the need to add more chlorine. If you have a salt water chlorinator remember to lower the amount of chlorine produced when the pool blanket is in use. If you have any questions please call our Customer Service department on 1800 777 255 or your local pool shop professional.



When servicing your Kreepy Krauly, look for this seal to ensure that the part you are buying is a certified genuine Kreepy Krauly part.

## TROUBLESHOOTING GUIDE

Kreepy Krauly pulsates rapidly but remains stationary, or travels very slowly.	Sole not fitted	Fit new sole
	Sole tread worn away.	Replace with new sole.
	Combined vacuum control plate and auto skim valve not fitted.	Fit combined vacuum control and auto skim to skimmer as per instructions.
	Seal fitted upside down.	Refer to markings on seal to determine correct fitting.
Kreepy Krauly travels around waterline in one direction only.	Auto skim valve jammed.	Remove valve from plate. Hold under water and operate by hand to free sand or grit. Dry off water and spray with good quality Silicon Lubricant. Replace in vacuum plate.
	Main body and swivel head are out of line.	Adjust Kreepy Krauly machine so main body and swivel head are perfectly aligned.
	Tiles near waterline on pool not flush with plastered walls	Fit float bar, or consult Kreepy Krauly representative.
	Seal becomes trapped between the back of the underwater light and the pool wall.	Fit float bar at lower level.
Kreepy Krauly sticks on underwater light.	Filtration unit blocked.	Clean filter thoroughly.
	Pump impeller blocked.	Clean pump impeller vanes.
	Pump or skimmer box strainer basket full, or blocked.	Clean strainer basket.

## AUTHORISED KREEPY KRAULY ACCESSORIES

### Cross Bar

When prevention of Kreepy Krauly climbing pool walls is required.

### Roller Bumper Strap

Used in pools with rough surfaces where standard bumper strap may wear excessively.

### Main Drain Cover

Used to replace the main drain grille to ensure smooth travel of Marathon over main drain. Simple installation. NO screws required.

### Vacuum Plate Clamp

Used to hold down the vacuum plate when the pool pump is off.

### Expanding Plug

Used for blocking some types of skimmer box pool drain inlets.

### Step Deflector

To prevent Kreepy Krauly from becoming caught in tight corners or between steps and the pool wall.

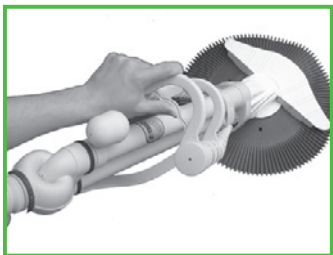
INLINE VALVE BASKET

IN-LINE VALVE

**WARNING** Never use in-line valve outside skimming box without strainer baskets

## HOW TO FINE TUNE YOUR KREEPY KRAULY

**FLOAT BAR** A float bar allows you to adjust the turning action of Kreepy Krauly. Two versions are available. Both clip and lock into the underside of the two bridges between the dive floats. The float bar fits as shown or inverted in either bridge – four positions are possible.



The Float Bar

Adjusting the angle and balance of Kreepy Krauly – if Kreepy Krauly is inclined at an angle greater than 45°, move the second hose weight towards the swivel head assembly. If Kreepy Krauly is inclined at an angle less than 45°, move the second hose weight towards the swivel head assembly.

Limited Edition



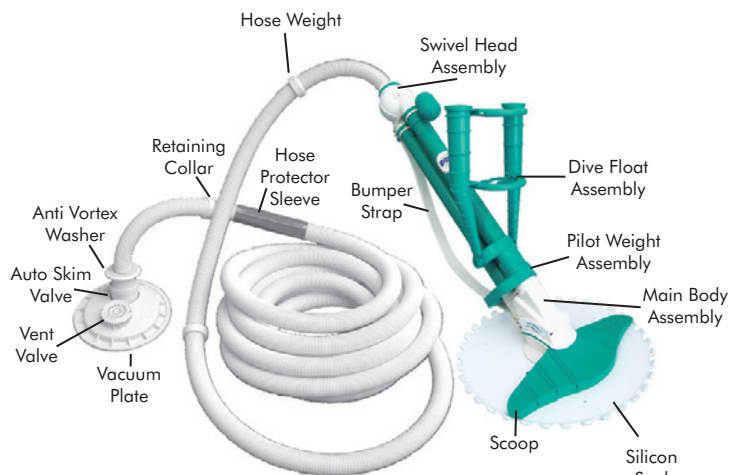
**FOREWORD** This manual is a guide to introduce you to the Kreepy Krauly Marathon System. It cannot cover the requirements of every installation, so please contact your local distribution centre for further advice should you need it.

## INTRODUCTION

Congratulations on the purchase of your Kreepy Krauly Marathon automatic pool cleaning system. It is designed to prevent your pool from ever getting dirty and will provide you with many extra hours of leisure in and around your swimming pool.

The Kreepy Krauly System requires no power source, operates hydraulically and has a 2 year warranty from the date of purchase, excluding fair wear and tear.

The only working part in the Kreepy Krauly System is the Flow Valve which is guaranteed for 10 years. The system has 3 major components, the Cleaner Unit, Special Hose and the Vacuum Plate with anti-surge and AutoSkim valves.



## HOW IT WORKS

Water flow from the main body assembly is alternately diverted into either the top or bottom drive tubes of Kreepy Krauly. The inertia of water trapped in each of the drive tubes provides a lifting and propelling action.

In operation, Kreepy Krauly travels around the pool, trailing the vacuum hose and the hose weights neutralize floatation of the vacuum hose near to Kreepy Krauly.

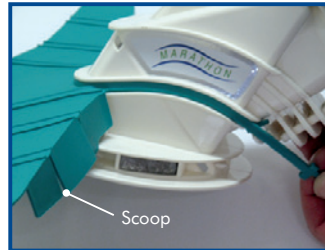
The combined vacuum plate control and AutoSkim valve supplied with Kreepy Krauly regulates the amount of vacuum supplied by the filtration system, also allowing pool surface skimming (providing the pool filtration system has an adequate flow).

For effective operation of Kreepy Krauly, all water flow through the main drain must be effectively blocked off. Kreepy Krauly will vacuum clean any well equipped pool, but it will not overcome problems associated with inadequate or improperly maintained filtration systems. The vacuum cleaning performance depends upon having an adequate filter system properly cleaned and maintained. This means that your pump and filter system should be operating efficiently. There must be good water flow into the suction side of the pump (skimmer) and good discharge from the pool inlet. All plumbing lines should be clear, strainer basket should be emptied and sand filters should be backwashed. Diatomaceous earth filters should be cleaned and recharged in accordance with their manufacturer's instructions. Cartridge filters should be thoroughly and carefully cleaned.

## ASSEMBLING YOUR KREEPY KRAULY

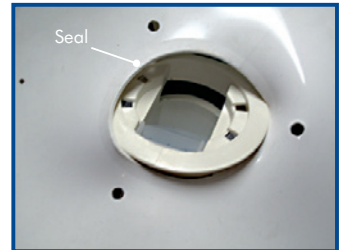
Please read this manual carefully before assembly and installation of your Kreepy Krauly. Like all pool equipment, periodic maintenance is required so please refer to the maintenance section of this manual for normal maintenance requirements. Kreepy Krauly is shipped to you partly assembled. Remove all the parts from the box. Assemble your Kreepy Krauly on a clean working surface. The hose and vacuum plate assembly are packed in separate cartons from the machine.

### STEP 1 The Scoop



Attach scoop as shown.

### STEP 2 Silicon Seal



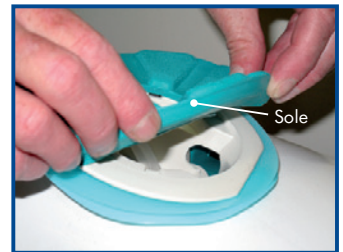
The premium performance silicon seal is fitted as shown. Once fitted it should rotate freely. Observe the warning "this side up".

### STEP 3 Slip-Rings (2)



Install both slip rings underneath the seal as shown.

### STEP 4 The Sole



The sole is fitted to the foot of the main body as shown.

### STEP 5 Bumper Strap



The bumper strap fits tightly into the main body as shown. The other end is fitted into the swivel head. Ensure full insertion.



### STEP 6 Relaxing your Kreepy Krauly Hose when first taken from the box.

To relieve any coiling in the hose after delivery or long storage lay the hose in a straight line beside your pool for one hot and sunny day before installation (28°C or above). Alternatively the hose may be filled with warm but not boiling water whilst lying in a straight line. This procedure can be used when the weather is cooler.

1. Detach the hose from the Kreepy Krauly and lay it beside the pool on a flat surface and in a straight line.
2. One end of the hose should also be close to the pool inlet.
3. Prop up both ends of the hose about 0.2 metre's above the ground.
4. Fill a bucket with warm water (around 50-60°C) and pour this water into the hose until it spills out of the other end.
5. Carefully roll the hose backwards and forwards to ensure even warm up.
6. After 30 to 40 seconds fill the hose with cold water. This can be done by either using the bucket or by placing the hose end on the pool outlet whilst the pump is working. The hose will now be relaxed and ready to be installed with your Kreepy Krauly.

## IMPORTANT INFORMATION

- Under no circumstances should the hose be stretched or picked up whilst full of water.
- Never hang the hose from hooks.
- Always store the hose loosely coiled on a flat surface.
- Do not use any other automatic pool cleaner hose as the performance of your Kreepy Krauly will be impaired.



Fitting Hose Weight on Hose

### STEP 7 Hose Weights (3)

Hose weights are fitted on the hose at the end which will be attached to Kreepy Krauly. The number of hose weights can vary to suit a particular installation. A standard three are supplied. Slide the first hose weight approximately 2200mm along hose. Slide the second hose weight approximately 1200mm along hose. Fit the third hose weight no more than 100mm from Kreepy Krauly. (See the "Balance System Information" overleaf).



Connecting Hose to Kreepy Krauly

### STEP 8 Connecting Hose

Fit the weighted end of the hose onto the swivel head assembly on the other end of the hose protector sleeve as shown.

## INSTALLING KREEPY KRAULY IN YOUR POOL

### STEP 1 Circulation System

Thoroughly clean and backwash your filter and clean the pump, strainer and skimmer box basket.

### STEP 2 Install Kreepy Krauly

Gently sink Kreepy Krauly into pool with the hose attached below the surface, seal first. With the pump operating place the free end of hose over a return to pool outlet. Water will be driven through the hose and Kreepy Krauly, expelling all air. Turn off the pump and ensure the end of the hose stays below the water level, whilst you perform steps 3 and 4 as follows.

### STEP 3 Fitting the Vacuum Control Valve

There are two basic types:

(1) **Combined Vacuum Plate and Auto Skim Valve.** This plate is supplied as a replacement for your existing vacuum plate. Place the auto skim valve into the opening provided in the vacuum plate ensuring it is seated firmly. Place the combined unit into your skimmer box making sure it is seated properly. Place the anti-vortex washer, correct side up, over the valve inlet.

**Note:** for some installations a retaining device such as a vacuum plate clamp may be necessary.

(2) **In-Line Valve** This valve is designed for installations where the combined vacuum plate and auto skim valve is not suitable. It is fitted to your existing vacuum plate or alternatively into the bottom suction opening of the skimmer box. When fitted this valve must remain below the water level to operate.

### STEP 4 Connecting Hose

Connect hose to auto skim valve. Start pump. Kreepy Krauly will start operating and a soft ticking sound will be heard.



Two options of connecting the hose to the Vacuum Plate Assembly.

## "TUNED" TO YOUR POOL

Every swimming pool has individual characteristics and your Kreepy Krauly may need to be "tuned" after installation. You will find many helpful hints for minor problems in the Trouble Shooting Guide. Please try these quick and easy remedies before calling your Kreepy Krauly service centre.

Where Kreepy Krauly has been installed by your local Authorised Kreepy Krauly Dealer, it has been set up for maximum performance in your pool. Please do not alter the set up characteristics without consulting the representative who installed it.

## CARING FOR YOUR KREEPY KRAULY

Any mechanical device is subject to breakage or damage due to neglect, but with a little care Kreepy Krauly will give you many years of excellent service. It is recommended that Kreepy Krauly is cleaned with detergent and water periodically.

**DO NOT USE** petrol or solvent as these will damage Kreepy Krauly.

**IMPORTANT** Kreepy Krauly must be removed from your pool during shock treatment with chlorine or any other chemicals for at least 24 hours. If the chemicals in your pool are too strong for people to swim in, then Kreepy Krauly should not be in the pool either.

**CAUTION:** If the hose must be coiled for storage, store it on a flat surface and as loosely as possible (minimum 1 metre diameter). This will assist Kreepy Krauly by minimising any coil setting of the hose when it is put back into the pool.

**IMPORTANT** Do not use any other pool hose or automatic pool cleaner hose as the performance of your Kreepy Krauly will be impaired. Should the hose ever require replacement, contact your Kreepy Krauly representative and insist upon a genuine Kreepy Krauly Hose.

## KREEPY KRAULY HOSE - USE, STORAGE AND REPLACEMENT

Your Kreepy Krauly hose is specially made because normal pool vacuum hoses do not allow free and proper movement of Kreepy Krauly. The unique Kreepy Krauly hose is made to be almost straight when relaxed in your pool.

**Should the hose ever require replacement, contact your Kreepy Krauly authorised consultant or service centre and insist upon a genuine replacement Kreepy Krauly Hose.**

## NORMAL MAINTENANCE AND REPLACEMENT OF WEARING PARTS

There are parts on the Kreepy Krauly which are subject to wear and tear. The suction seal, scrubbing sole and the bumper are in direct contact with the pool floor and wall surface. The pool owner should check the sole and bumper regularly for wear as they protect Kreepy Krauly from damage.

Wearing parts can be easily replaced. Should Kreepy Krauly fail to function, carefully check the entire pool system and Kreepy Krauly. If Kreepy Krauly moves slowly with a slower than normal pulse rate and little or no water passing through the auto skim valve, then the filter system should be backwashed or cleaned.

Check that operation of the vacuum plate valve is free by removing and depressing by hand. Wash out any sand or grit. Check pump and filter for proper operation. If the filter system is operating properly, and no part has been damaged, blockage of the machine by extremely large leaves, nuts or other large objects are the most common cause of the system failing to operate. Look through the clear trap door on the main body. Remove any debris and ensure free movement of the flow valve.



When servicing your Kreepy Krauly, look for this seal to ensure that the part you are buying is a certified genuine Kreepy Krauly part.